

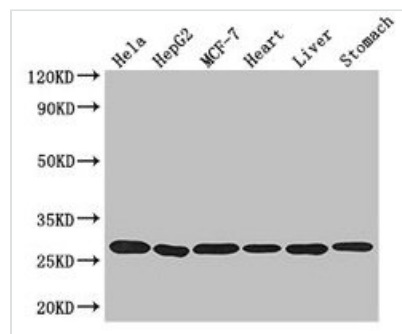


# Gentaur

## PRDX3 Antibody

<b>Product Code</b>	CSB-PA018656LA01HU
<b>Storage</b>	Upon receipt, store at -20°C or -80°C. Avoid repeated freeze.
<b>Uniprot No.</b>	P30048
<b>Immunogen</b>	Recombinant Human Thioredoxin-dependent peroxide reductase, mitochondrial protein (63-256AA)
<b>Raised In</b>	Rabbit
<b>Species Reactivity</b>	Human, Mouse
<b>Tested Applications</b>	ELISA, WB, IHC, IF, IP; Recommended dilution: WB:1:2000-1:10000, IHC:1:20-1:200, IF:1:50-1:200, IP:1:200-1:2000
<b>Form</b>	Liquid
<b>Conjugate</b>	Non-conjugated
<b>Storage Buffer</b>	Preservative: 0.03% Proclin 300 Constituents: 50% Glycerol, 0.01M PBS, PH 7.4
<b>Purification Method</b>	>95%, Protein G purified
<b>Isotype</b>	IgG
<b>Clonality</b>	Polyclonal
<b>Alias</b>	Thioredoxin-dependent peroxide reductase, mitochondrial (EC 1.11.1.15) (Antioxidant protein 1) (AOP-1) (HBC189) (Peroxiredoxin III) (Prx-III) (Peroxiredoxin-3) (Protein MER5 homolog), PRDX3, AOP1
<b>Immunogen Species</b>	Homo sapiens (Human)
<b>Research Area</b>	Neuroscience
<b>Target Names</b>	PRDX3

### Image



#### Western Blot

Positive WB detected in: HeLa whole cell lysate, HepG2 whole cell lysate, MCF-7 whole cell lysate, Mouse heart tissue, Mouse liver tissue, Mouse stomach tissue

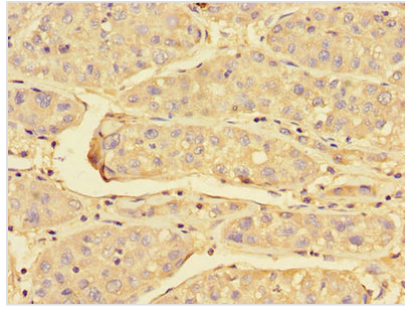
All lanes: PRDX3 antibody at 3.2µg/ml

Secondary

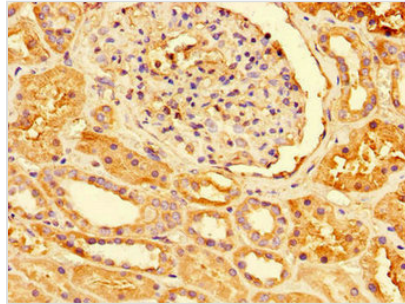
Goat polyclonal to rabbit IgG at 1/50000 dilution

Predicted band size: 28, 26 kDa

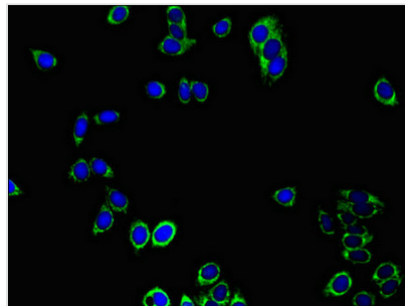
Observed band size: 28 kDa



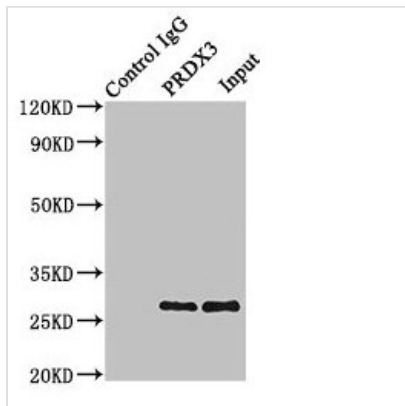
Immunohistochemistry of paraffin-embedded human liver cancer using CSB-PA018656LA01HU at dilution of 1:100



Immunohistochemistry of paraffin-embedded human kidney tissue using CSB-PA018656LA01HU at dilution of 1:100



Immunofluorescent analysis of HepG2 cells using CSB-PA018656LA01HU at dilution of 1:100 and Alexa Fluor 488-conjugated AffiniPure Goat Anti-Rabbit IgG(H+L)



Immunoprecipitating PRDX3 in HeLa whole cell lysate  
Lane 1: Rabbit control IgG instead of CSB-PA018656LA01HU in HeLa whole cell lysate. For western blotting, a HRP-conjugated Protein G antibody was used as the secondary antibody (1/2000)  
Lane 2: CSB-PA018656LA01HU (8µg) + HeLa whole cell lysate (500µg)  
Lane 3: HeLa whole cell lysate (10µg)

**Gentaur Molecular Products BVBA**

**Address:** Voortstraat 49, 1910 Kampenhout, Belgium

**T:** 0032 16 58 90 45 | **E:** info@gentaur.com

**Websites:** www.gentaur.com | www.maxanim.com