



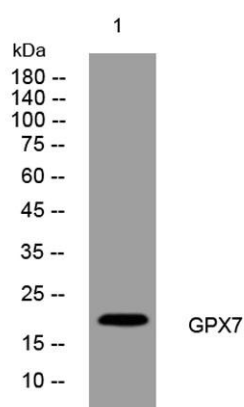
AffiAB[®] GPX7 Rabbit Polyclonal Antibody

Cat No. AFG-EKA-11495

For research use only

Overview

Product Name	GPX7 rabbit pAb
Host species	Rabbit
Applications	WB
Species Cross-Reactivity	Human; Mouse
Recommended dilutions	WB 1: 500-2000
Immunogen	Synthesized peptide derived from human GPX7 AA range: 77-127
Specificity	This antibody detects endogenous levels of GPX7 at Human/Mouse
Formulation	Liquid in PBS containing 50% glycerol, 0.5% BSA and 0.02% sodium azide.
Storage	Store at -20°C. Avoid repeated freeze-thaw cycles.
Protein Name	GPX7
Gene Name	GPX7 GPX6 UNQ469/PRO828
Cellular localization	Secreted .
Purification	The antibody was affinity-purified from rabbit antiserum by affinity-chromatography using epitope-specific immunogen.
Clonality	Polyclonal
Concentration	1 mg/ml
Observed band	
Human Gene ID	2882
Human Swiss-Prot Number	Q96SL4
Alternative Names	
Background	



Western blot analysis of lysates from U2OS cells, primary antibody was diluted at 1:1000, 4° over night



AffiGEN Inc.

560 Apple Ln - Baileys Harbor, WI 54202

For ordering and technical support:

Gentaur Molecular Products BVBA

Address: Voortstraat 49, 1910 Kampenhout, Belgium

T: 0032 16 58 90 45 | **E:** info@gentaur.com

Websites: www.gentaur.com | www.maxanim.com